

Categories:

[CT Head](#)

[CT Facial, Temporal Bones, Sinuses etc...](#)

[CT Soft Tissue Neck](#)

[CT Cervical Spine](#)

[CT Thoracic Spine](#)

[CT Lumbar Spine](#)

[CT Chest](#)

[CT Abdominal](#)

[CT Pelvis](#)

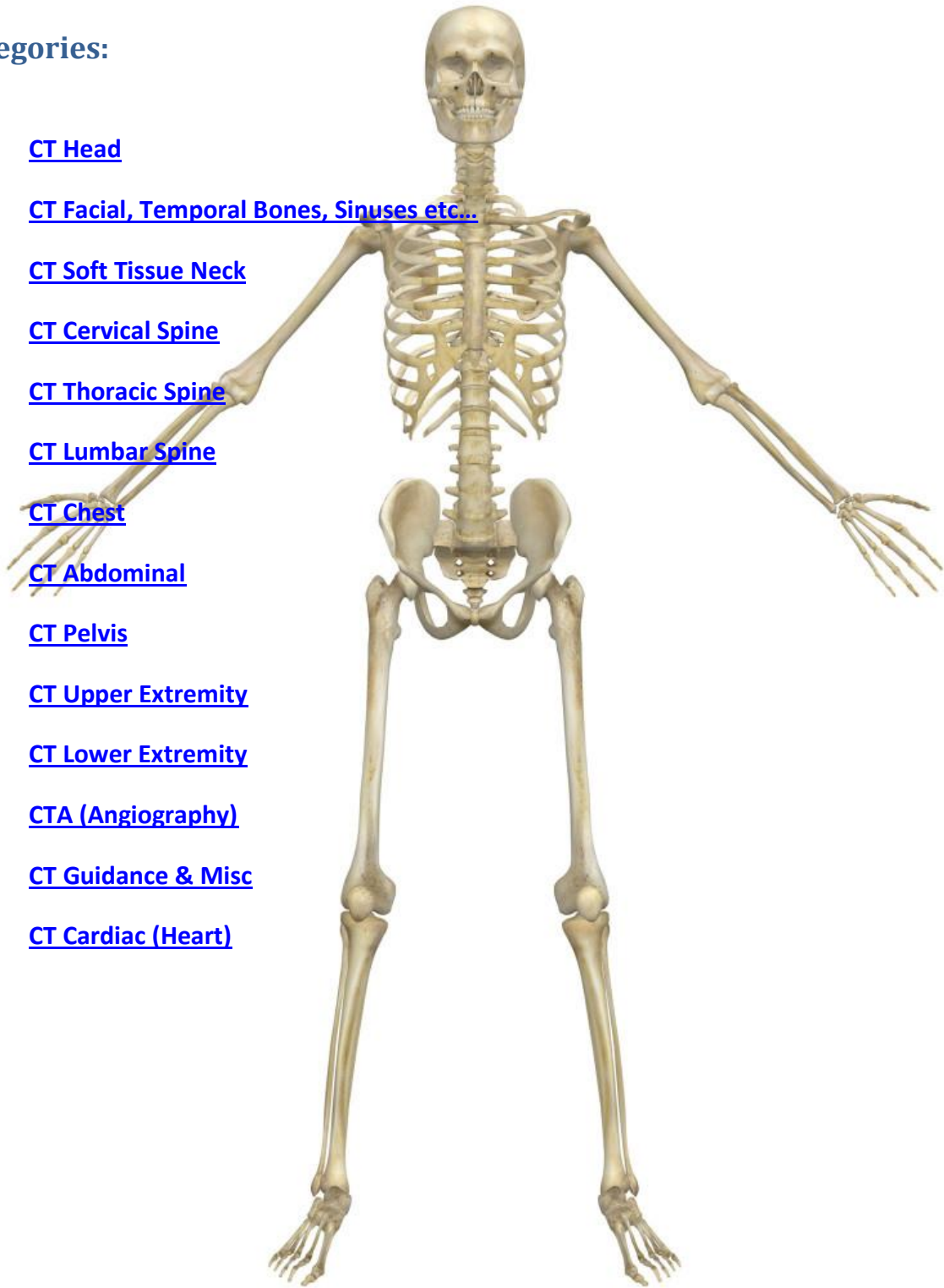
[CT Upper Extremity](#)

[CT Lower Extremity](#)

[CTA \(Angiography\)](#)

[CT Guidance & Misc](#)

[CT Cardiac \(Heart\)](#)



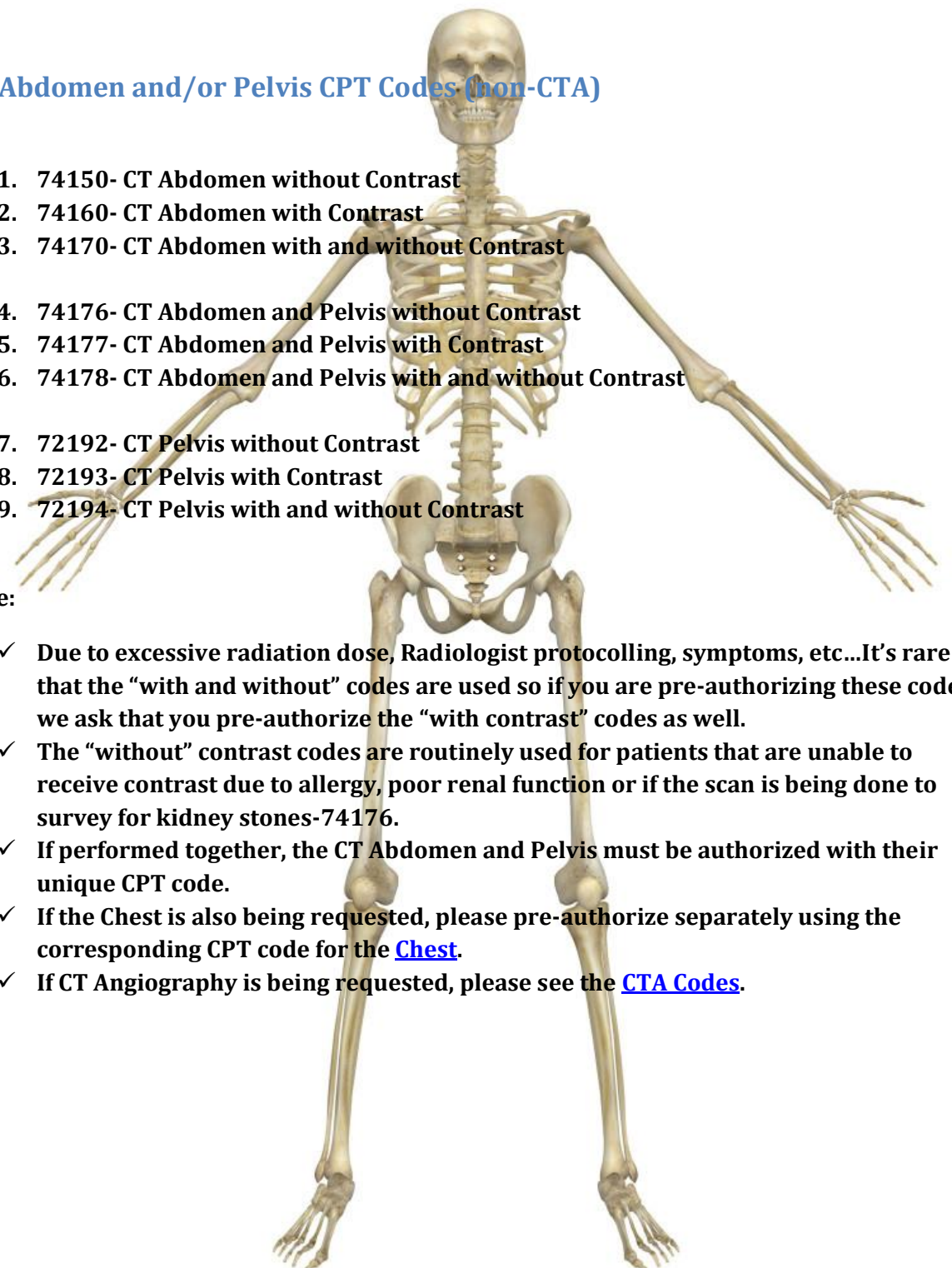
CT Head CPT Codes (non-CTA)

1. 70450-CT Head without contrast
2. 70460-CT Head with contrast (rarely used by itself)
3. 70470-CT Head with and without contrast

Note:

- ✓ Many times the Radiologist will protocol these exams based on renal function, previous imaging exams, patient history, etc...So we ask that you pre-authorize both the 70450 and 70470 if possible.
- ✓ As mentioned above, CT Head is almost never performed only “with” contrast.
- ✓ If CT Angiography is being requested, please see the [CTA codes](#).

CT Abdomen and/or Pelvis CPT Codes (non-CTA)

- 
1. 74150- CT Abdomen without Contrast
 2. 74160- CT Abdomen with Contrast
 3. 74170- CT Abdomen with and without Contrast

 4. 74176- CT Abdomen and Pelvis without Contrast
 5. 74177- CT Abdomen and Pelvis with Contrast
 6. 74178- CT Abdomen and Pelvis with and without Contrast

 7. 72192- CT Pelvis without Contrast
 8. 72193- CT Pelvis with Contrast
 9. 72194- CT Pelvis with and without Contrast

Note:

- ✓ Due to excessive radiation dose, Radiologist protocolling, symptoms, etc...It's rare that the "with and without" codes are used so if you are pre-authorizing these codes, we ask that you pre-authorize the "with contrast" codes as well.
- ✓ The "without" contrast codes are routinely used for patients that are unable to receive contrast due to allergy, poor renal function or if the scan is being done to survey for kidney stones-74176.
- ✓ If performed together, the CT Abdomen and Pelvis must be authorized with their unique CPT code.
- ✓ If the Chest is also being requested, please pre-authorize separately using the corresponding CPT code for the [Chest](#).
- ✓ If CT Angiography is being requested, please see the [CTA Codes](#).

[Back to top](#)



CT Chest (Thorax) CPT Codes (non-CTA)

1. 71250- CT Chest without Contrast
2. 71260- CT Chest with Contrast
3. 71270- CT Chest with and without
4. No CPT-CT Lung Screening

Note:

- ✓ Due to excessive radiation dose, Radiologist protocolling, symptoms, etc...It's rare that the "with and without" codes are used so if you are pre-authorizing these codes, we ask that you pre-authorize the "with contrast" codes as well.
- ✓ The "without" contrast codes are routinely used for patients that are unable to receive contrast due to allergy, poor renal function or another contraindications to IV contrast.
- ✓ If ordering for suspected pulmonary embolus, see the [CT Angiography chest code](#).

CT Upper Extremity CPT Codes (non-CTA)

1. 73200- CT Upper Extremity without contrast
2. 73201- CT Upper Extremity with contrast
3. 73202- CT Upper Extremity with and without contrast

Note:

- ✓ Whether the shoulder, humerus, forearm, elbow, wrist, hand or finger or all are requested; only one pre-authorization would be needed.
- ✓ Most commonly performed without contrast for occult fracture or follow up of known fracture.
- ✓ If the requested exam is a CT Arthrogram, please pre-authorize the “with contrast” code 73201.
- ✓ If CT Angiography is being requested, please see the [CTA Codes](#).

[Back to top](#)

CT Angiography CPT Codes (CTA)

1. 70496- CT Angiography Head or Brain
2. 70498- CT Angiography Neck
3. 71275- CT Angiography Chest
4. 74175- CT Angiography Abdomen
5. 72191- CT Angiography Pelvis
6. 75635- CT Angiography Abdominal Aorta and Bilat Lower extremities (aka Runoff)
7. 74174- CT Angiography Abdomen and Pelvis
8. 73706- CT Angiography Lower Extremity
9. 73206- CT Angiography Upper Extremity

Note:

- ✓ CT angiography exams can be performed either with and without contrast or just with contrast depending on the Radiologist protocol, the CPT code is the same.
- ✓ When performed together, the CT Angiography Abdomen and Pelvis must be authorized with its unique CPT code 74174.
- ✓ When CTA of the brain and neck are ordered together, both 70496 and 70498 must be pre-authorized. (common in the case of carotid stenosis or dissection)

CT Lower Extremity CPT Codes (non-CTA)

1. 73700- CT Lower Extremity without contrast
2. 73701- CT Lower Extremity with contrast
3. 73702- CT Lower Extremity with and without contrast

Note:

- ✓ Whether the hip, femur, knee, tib-fib, ankle, foot, toes or all are requested; only one pre-authorization would be needed.
- ✓ Most commonly performed without contrast for occult fracture or follow up of known fracture.
- ✓ If the requested exam is a CT Arthrogram, please pre-authorize the “with contrast” code 73701.
- ✓ If CT Angiography is being requested, please see the [CTA Codes](#).

[Back to top](#)

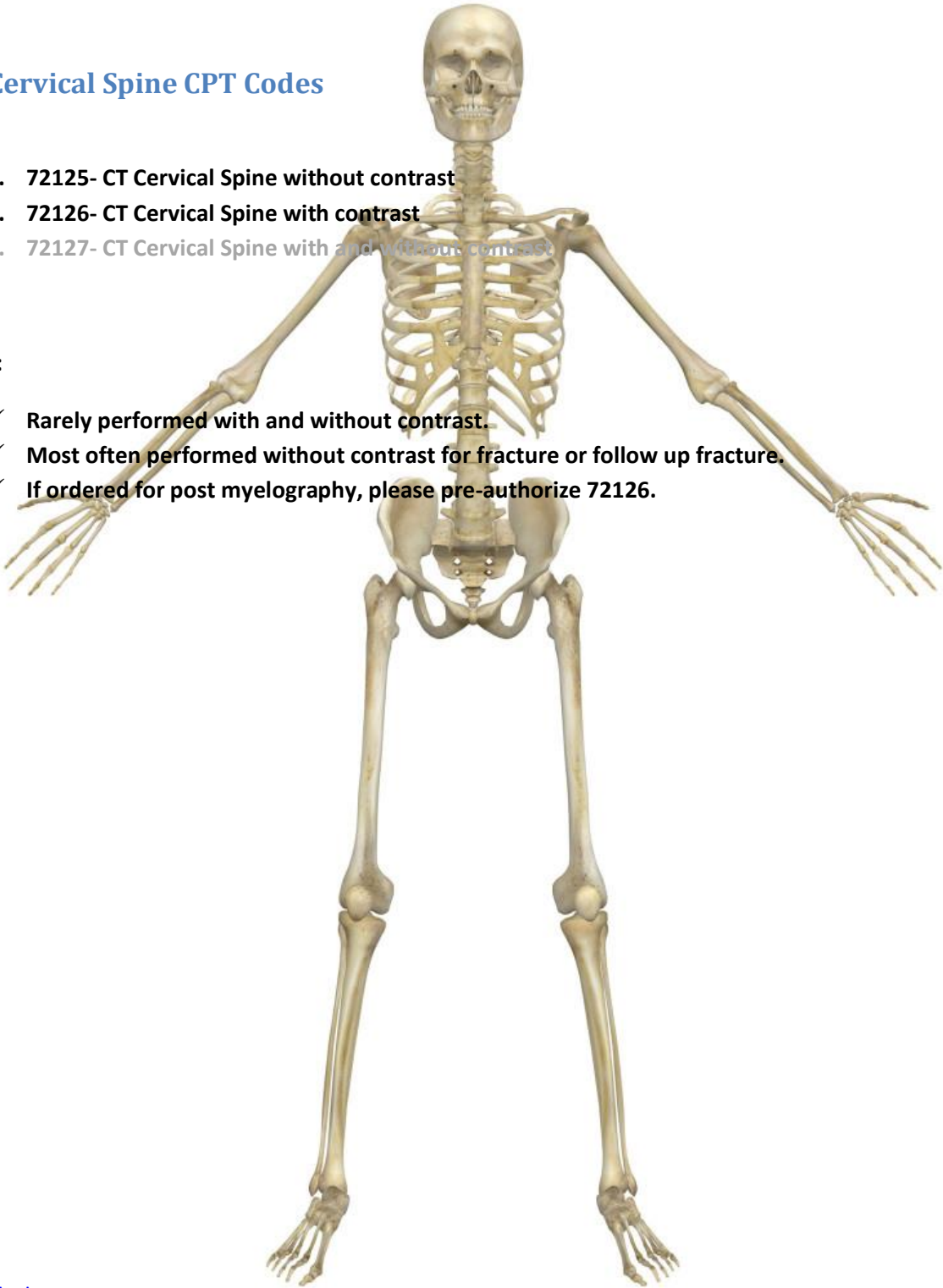
CT Cervical Spine CPT Codes

1. **72125- CT Cervical Spine without contrast**
2. **72126- CT Cervical Spine with contrast**
3. ~~72127- CT Cervical Spine with and without contrast~~

Note:

- ✓ Rarely performed with and without contrast.
- ✓ Most often performed without contrast for fracture or follow up fracture.
- ✓ If ordered for post myelography, please pre-authorize 72126.

[Back to top](#)



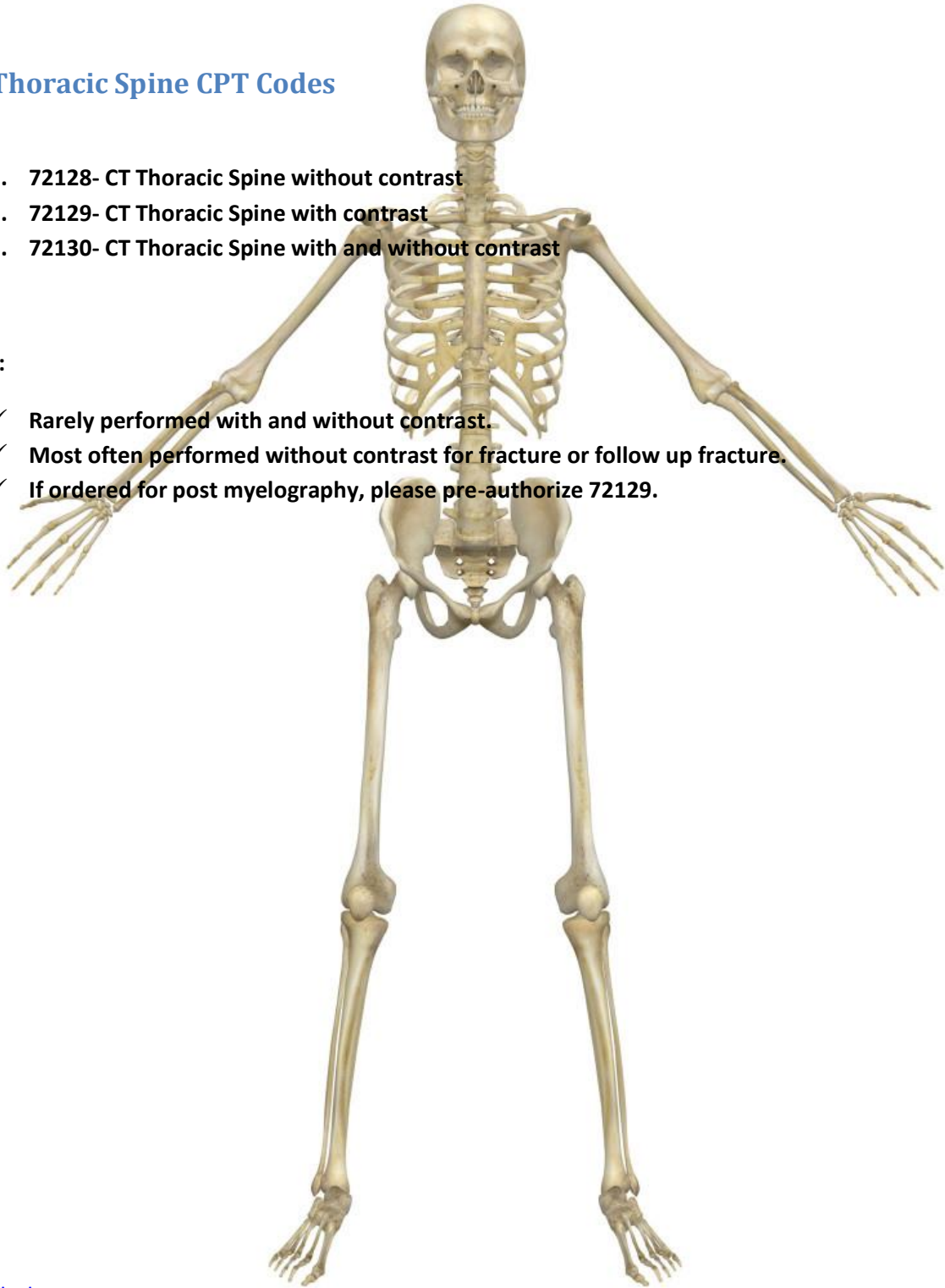
CT Thoracic Spine CPT Codes

1. 72128- CT Thoracic Spine without contrast
2. 72129- CT Thoracic Spine with contrast
3. 72130- CT Thoracic Spine with and without contrast

Note:

- ✓ Rarely performed with and without contrast.
- ✓ Most often performed without contrast for fracture or follow up fracture.
- ✓ If ordered for post myelography, please pre-authorize 72129.

[Back to top](#)

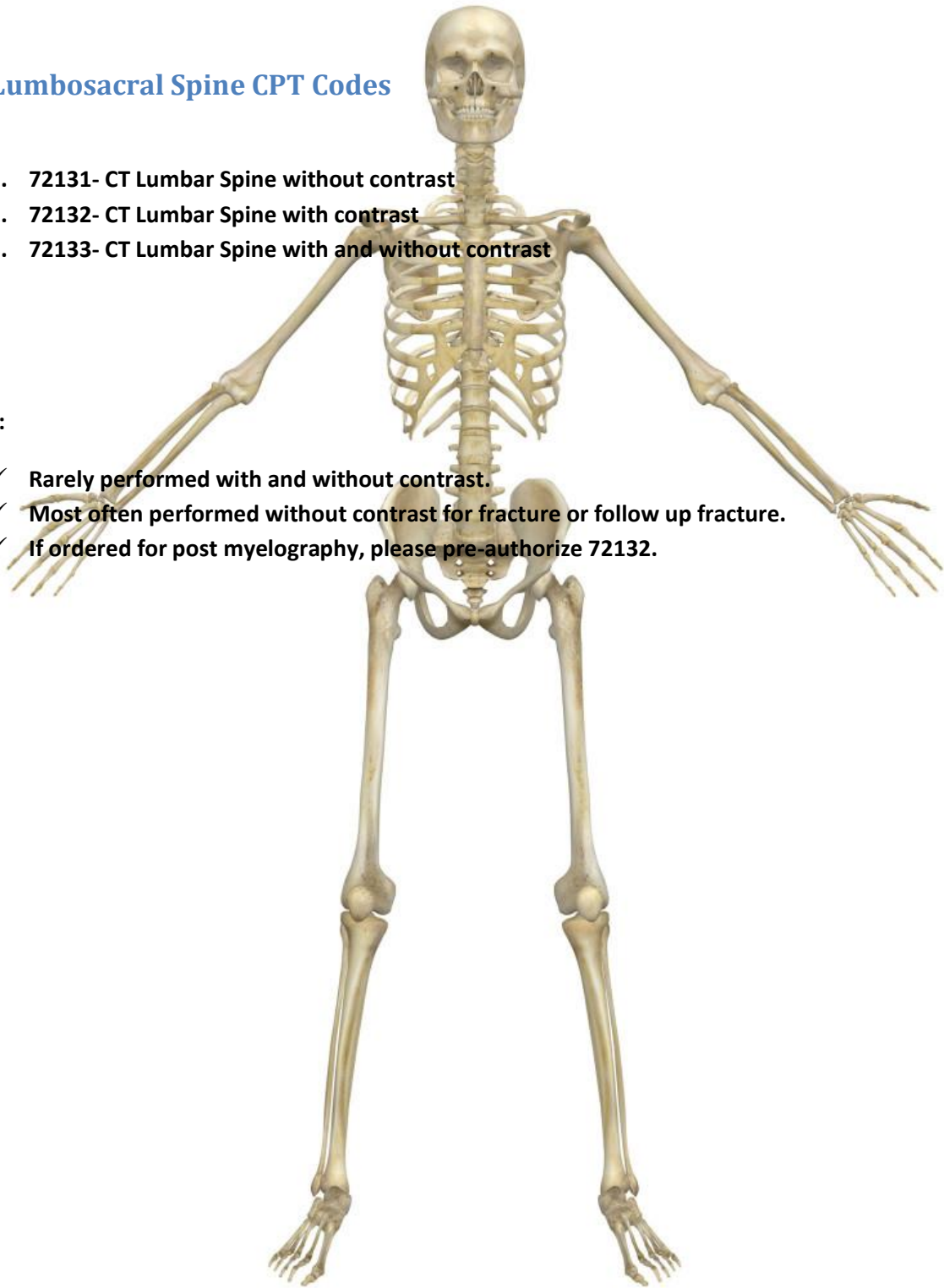


CT Lumbosacral Spine CPT Codes

1. 72131- CT Lumbar Spine without contrast
2. 72132- CT Lumbar Spine with contrast
3. 72133- CT Lumbar Spine with and without contrast

Note:

- ✓ Rarely performed with and without contrast.
- ✓ Most often performed without contrast for fracture or follow up fracture.
- ✓ If ordered for post myelography, please pre-authorize 72132.



CT Sinus, Facial Bones, Orbits, Temporal Bones, Maxilla CPT Codes

1. 70480- CT Orbits without contrast
2. 70481- CT Orbits with contrast
3. 70482- CT Orbits with and without contrast
4. 70486- CT Maxillofacial without contrast
5. 70487- CT Maxillofacial with contrast
6. 70488- CT Maxillofacial with and without contrast

- ✓ The codes 70480, 70481, 70482 cover orders for orbits, temporal bones, mastoids, IAC's, sella-turcica.
- ✓ The codes 70486, 70487, 70488 cover orders for maxillofacial, sinuses, facial bones.

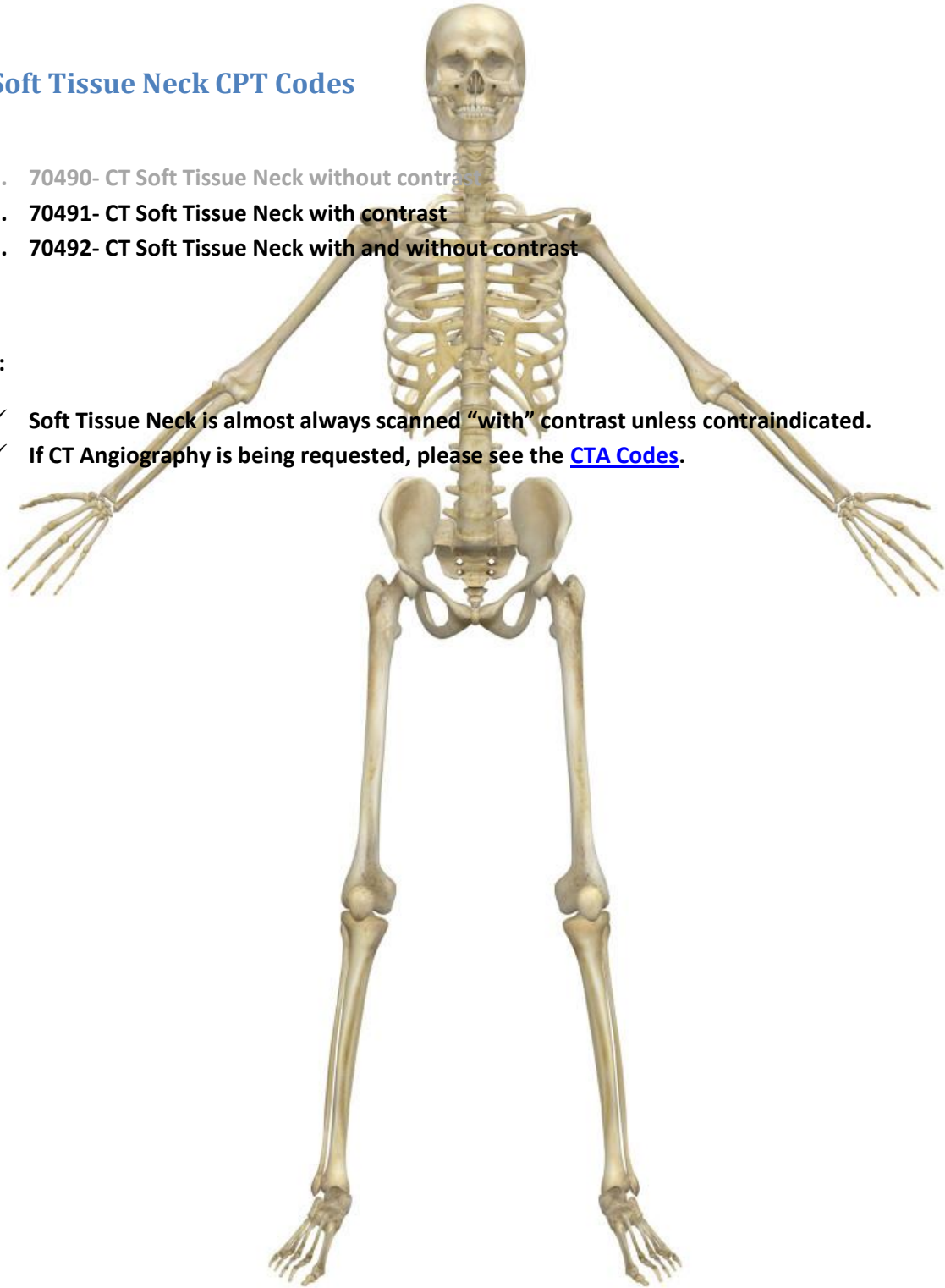
[Back to top](#)

CT Soft Tissue Neck CPT Codes

1. 70490- CT Soft Tissue Neck without contrast
2. 70491- CT Soft Tissue Neck with contrast
3. 70492- CT Soft Tissue Neck with and without contrast

Note:

- ✓ Soft Tissue Neck is almost always scanned “with” contrast unless contraindicated.
- ✓ If CT Angiography is being requested, please see the [CTA Codes](#).



[Back to top](#)

CT Guided procedure CPT Codes

1. 77012- CT Needle Biopsy Guidance/Guidance for needle placement
2. 49083- CT Paracentesis Guidance
3. 77011- CT Stereotactic guidance/Localization
4. 75989- CT Cyst/Fluid/Abscess drainage guidance

Note:

- ✓ For 77012, additional surgical CPT codes will be added depending on the body part undergoing biopsy. (Lung, liver, kidney etc...)

CT Cardiac CPT Codes

1. **75574- CT Angiography Heart**
2. **75571- CT Cardiac Calcium Scoring**
3. **75572- Heart for structure and morphology**

Note:

- ✓ **The interpretation for 75574 will be issued by a Cardiologist.**
- ✓ **75574 will include a calcium scoring.**
- ✓ **An over-read of the non-cardiac structures will also be performed by a board certified Radiologist.**

Revision date: 05/05/2017

Send comments or questions to mnpacs@mclaren.org

[Back to top](#)